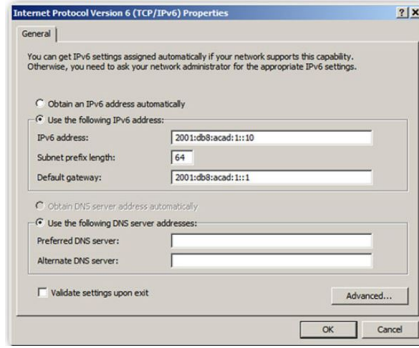
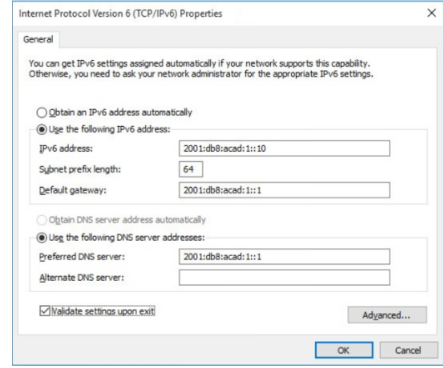


## GLOBAL UNICAST ADDRESS

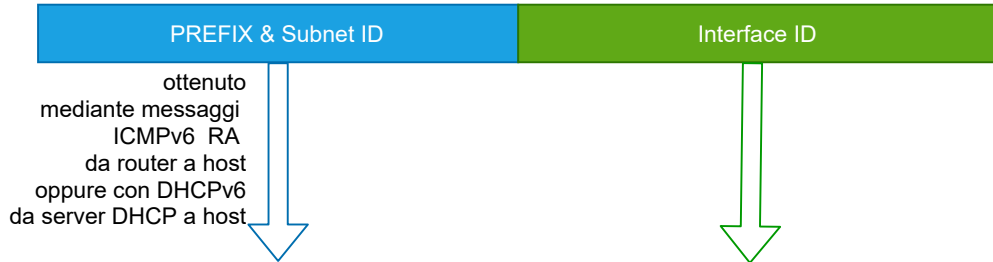
### STATIC



forse qs è meglio



### DYNAMIC



stateless (SLAAC only)	RA opzione A*	il router fornisce tutta la configurazione (prefix, length, DG, DNS)	EUI-64 ricavato da MAC address oppure <u>numero casuale</u> generato da OS
stateless (SLAAC & DHCPv6)	RA opzione AO	router dà prefix, ... server DHCPv6 dà DNS	...anche InterfaceID
stateful** (DHCPv6 only)	RA opzione M	server DHCPv6 dà tutto... tranne DG (lo dà il router)	

\* opzione di default (predefinita)

\*\* stateful = il server DHCPv6 tiene traccia degli indirizzi assegnati

A = Address Autoconfiguration O=Other configuration M=Managed Address Configuration

## LINK LOCAL UNICAST ADDRESS

### STATIC

Host: ---  
Router/Switch: mediante comandi CLI

### AUTOMATIC

